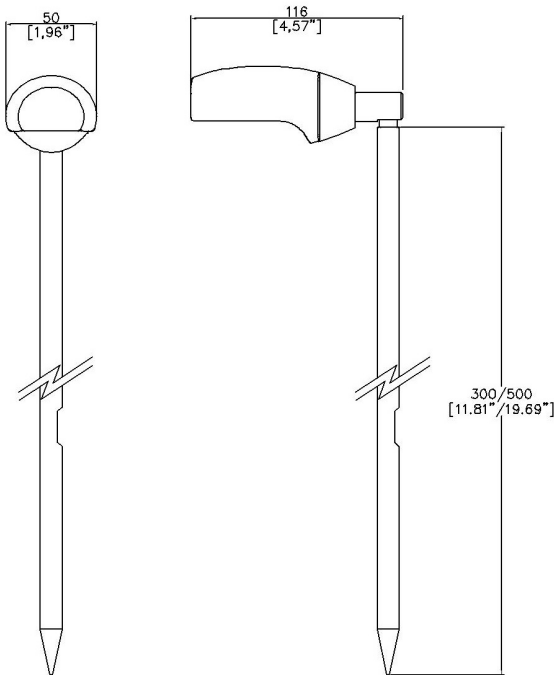


VistaFlood Spike



50mm (1.97") overall diameter. IP65 constant voltage exterior grade spike mounted fully adjustable ultra wide flood light. 90° Pivot and 359° rotation.

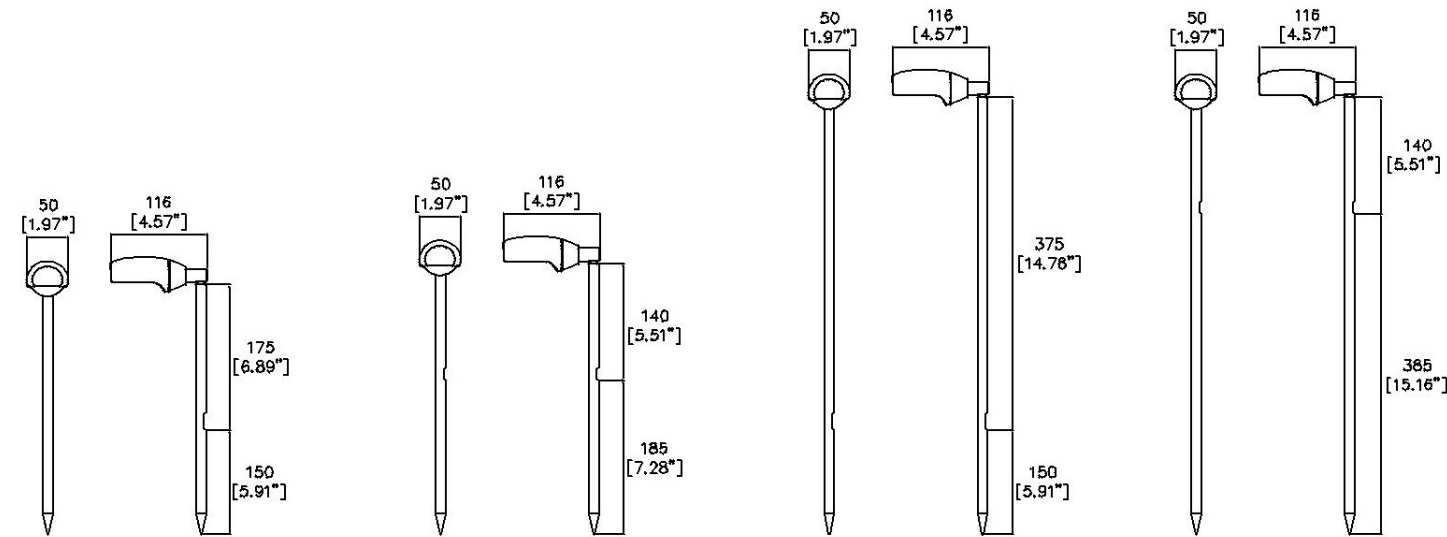


VF001-K

LED Source	LED
CCT	2700K
Supply Voltage	24v
Power inc driver	6.5W
Beam Angle	117°
Delivered Lumens	468
Delivered Intensisty cd	181
Efficacy lm/w	72
CRI	≥90 CRI
Ingress Protection	IP65

Project Ref: _____

Location Ref: _____



300B - Cable exit located 125mm from bottom

300T - Cable exit located 125mm from top

500B - Cable exit located 125mm from bottom

500T - Cable exit located 125mm from top

.....

Fixture Order Code: VF001 - 27 - BK - K - - -

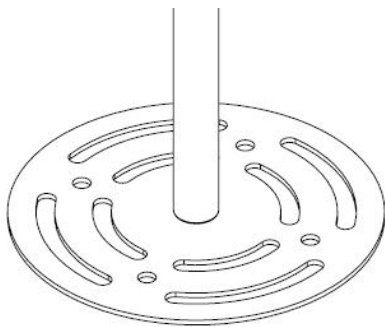
Fixture	VistaFlood
CCT	2700K
Finish	Black
Mount	Spike Mounted
Protocol	Non-Dim Analogue (0-10v) Phase DALI
Stem Length	300mm length. Cable exit 125mm from bottom 300mm length. Cable exit 125mm from top 500mm length. Cable exit 125mm from bottom 500mm length. Cable exit 125mm from top

Please refer to installation instruction for wiring diagram
All Lucent Vista products are supplied with a 5m cable
This product has undergone a 1000 hour salt spray test in accordance with ASTM B117

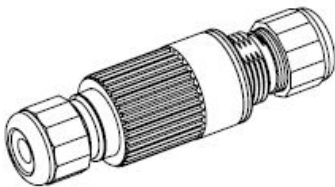
Project Ref:_____

Location Ref:_____

Accessories



VS-ANCHOR



TH381

Accessories Order Code:

Accessories
VS-ANCHOR
TH381

Ground Anchor
IP68 Connector

Technical Details

Dimming. Whilst Lucent can offer the majority of its luminaires with various dimming options, it remains the responsibility of the specifier/installer to check and ensure compatibility of any control equipment used. Additional cabling may be required depending on the dimming protocol specified.

First Fix Requirement. Luminaire comprised of fixture body with ceiling trim and installation kit, which is to be fitted into the ceiling once finished. Ensure correct alignment of the installation kit before final assembly (see luminaire instllation instructions for details)

IP Rating. Tested from underside of the ceiling

It is the policy of Lucent Lighting to continually review and improve its products and therefore reserve the right to change any details of product or withdraw specifications without prior notice.

Luminaires designed to comply with EN60598 and all other standards.

This specification sheet supersededs all previous versions.

All intellectual property rights pertaining to the product described above and to this document are owned by or licensed to Lucent Lighting Ltd.

We reserve the right to take whatever action is necessary to protect those intellectual property rights.

Please notify Lucent Lighting Ltd of any inaccuracies immediately. E&OE

Light efficiency:

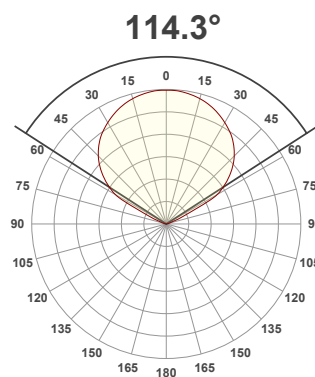
72 Lumen/Watt

Light quality:

CRI: 91.4

Color temperature:

2700 K



Product name:

VistaFlood 2700K

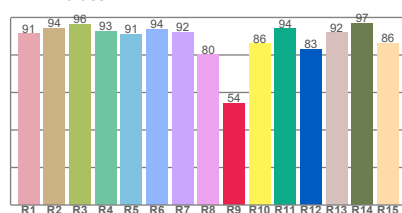
Item number:

VF001-27

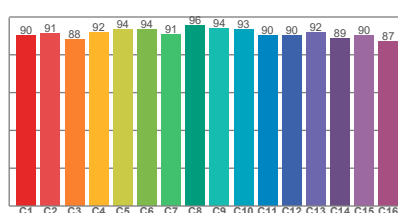
Delivered information for above fixture and LED combination.

Output: 468 Lumen Peak intensity: 181 cd Power consumption: 6.5

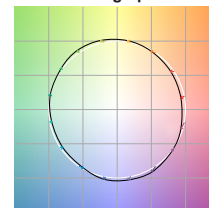
CRI R values



TM30 C Values

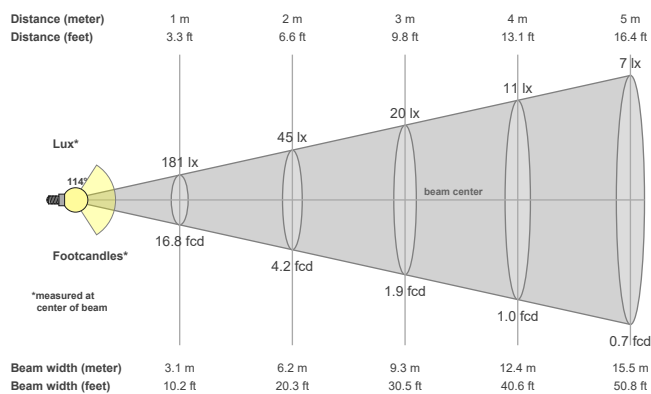


Color vector graphics



Color temperature	Color rendering index	Red component	Color fidelity	Color gamut	Color quality scale	Color coordinate cie 1931	Color coordinate cie 1931	Color coordinate	Color coordinate	Color deviation from black body
CCT	CRI	CRI R9	TM30 Rf	TM30 Rg	CQS	x	y	u	v	Δuv
2700 K	91.4	54.0	91.3	100.1	89.6	0.460	0.411	0.261	0.352	0.0013

Beam details



Beam angels

Beam angle 50%	Field angle 10%	Cutoff angle 2,5%
114.3°	135.3°	150.5°

Beam intensities

Peak intensity	Int. ratio in 120° cone	Int. ratio in 90° cone
181 cd	90.6%	61.3%

Beam intensities from 1-20m

[illegible]

The above information is for 2700K colour temperature.